



Medical Office Building

936 W. Ave. J-4
Lancaster, CA



4195 E. THOUSAND OAKS
BLVD. #125
WESTLAKE VILLAGE, CA
91362

FOR LEASE

TEL: 805-371-4422
FAX: 805-371-4122

► **Fully Built Out Medical Office Suites**

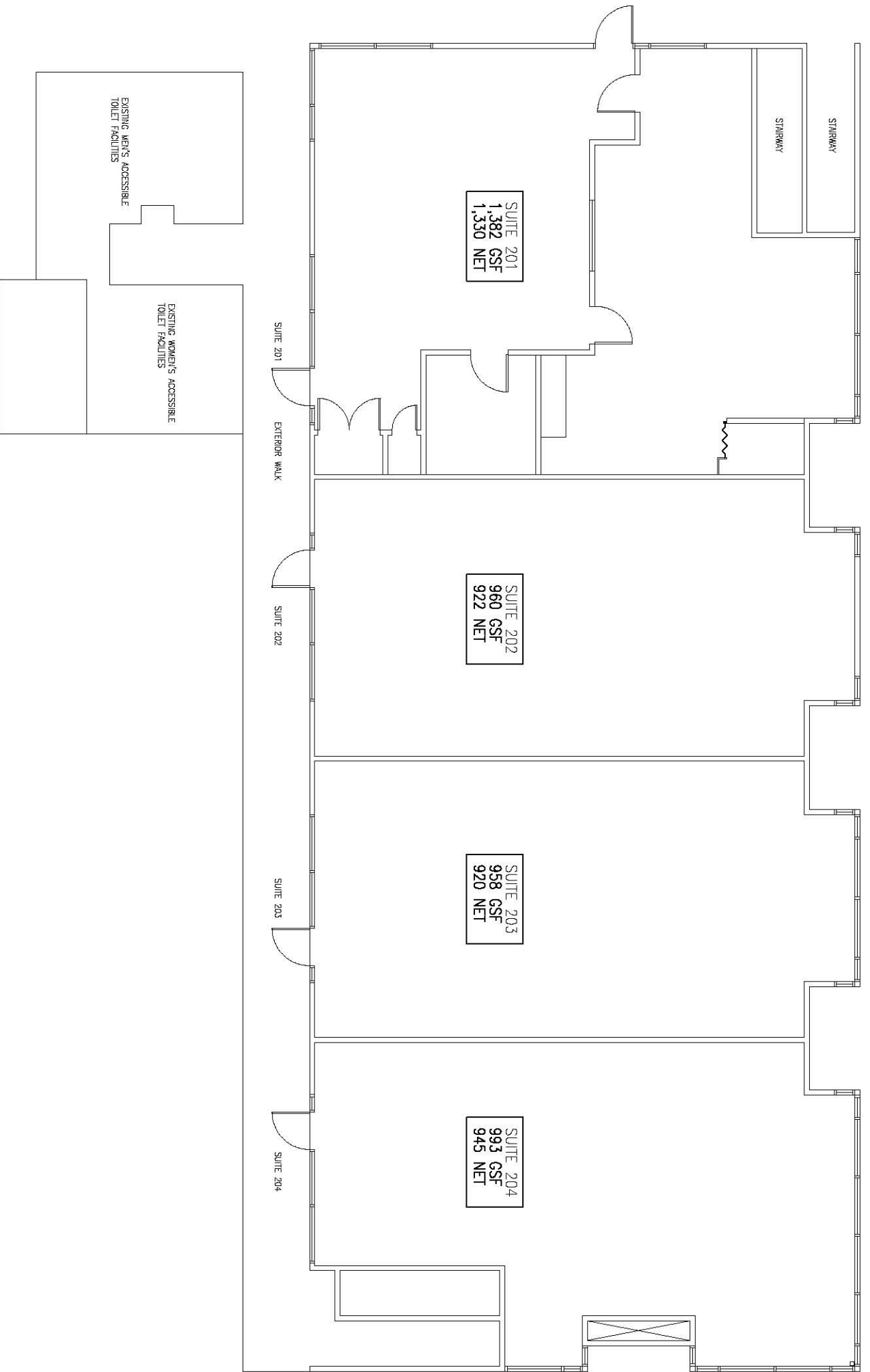
► **700 S.F. to Full Building Available**

Reduced to
\$1.35 SF

► **Close Proximity to Antelope Valley Hospital,
Restaurants and other Services**

► **Ample Parking**

WWW.MARTINPROP.COM
ROB@MARTINPROP.COM



FLOOR PLAN

SCALE: 1/4" = 1'-0"

